



GMT MONTHLY MEMBERSHIP PROGRESS REPORT

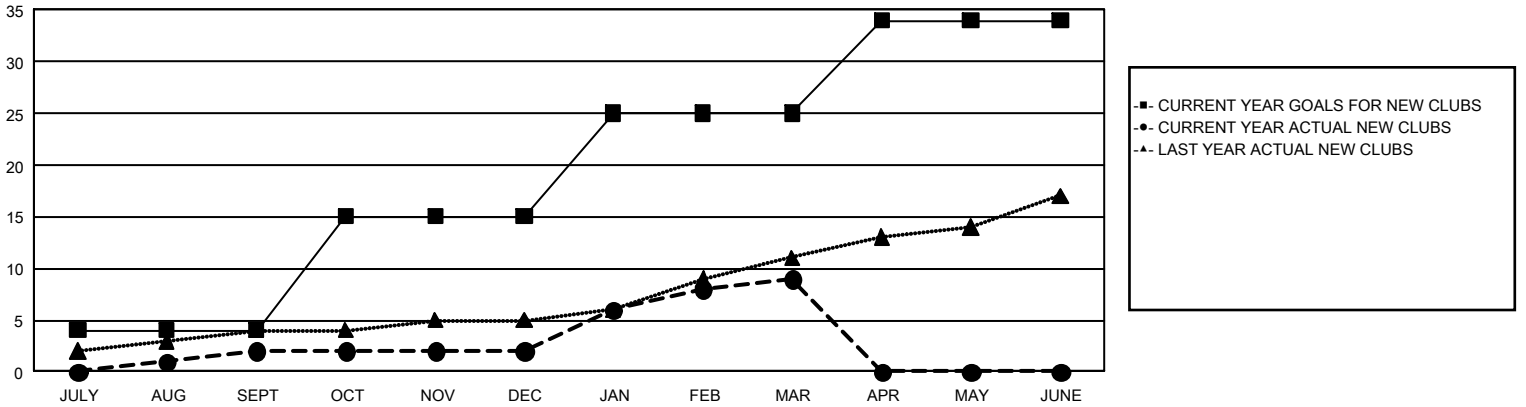
GAT Constitutional Area 2

Results as of: 3/31/2024

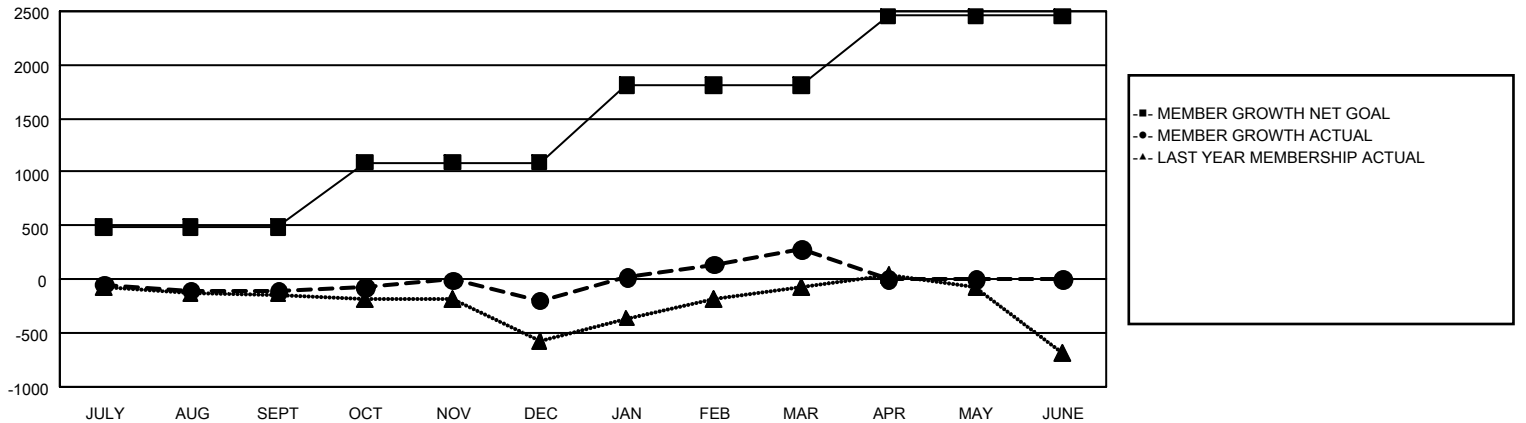
REPORT DOES NOT INCLUDE CLUBS IN UNDISTRICTED AREAS.

Clubs				Members			
RESULTS FOR 2023-2024				RESULTS FOR 2023-2024			
QUARTER	NEW CLUB GOAL	NEW CLUBS	DROPPED CLUBS	QUARTER	MEMBER GROWTH NET GOAL	MEMBER GROWTH ACTUAL	DROPPED MEMBERS ACTUAL (including transfers)
JULY/AUG/SEPT	4	2	3	JULY/AUG/SEPT	483	577	610
OCT/NOV/DEC	11	0	4	OCT/NOV/DEC	609	982	978
JAN/FEB/MAR	10	7	1	JAN/FEB/MAR	718	1,084	528
APR/MAY/JUNE	9	0	0	APR/MAY/JUNE	647	0	0

GOALS AND ACTUAL NEW CLUBS CUMULATIVE



GOALS AND ACTUAL MEMBERS CUMULATIVE



DROPPED CLUBS: 8	694 CLUBS OF 1,184 ADDED 1 OR MORE NEW MEMBERS	<u>GENDER DISTRIBUTION</u>	
<u>DROPPED MEMBERS</u>		MALE	16,623 (63.70%)
DECEASED	285	FEMALE	9,465 (36.27%)
CLUB CANCELLED	14	TOTAL FAMILY UNIT MEMBERS 4,936	
OTHER	1,815		
TOTAL	2,114		
CLICK HERE FOR CUMULATIVE MEMBERSHIP DATA		FAMILY MEMBERS PAYING HALF DUES 2,531	